

Conservation of LWfG on the European migration route

Partner: Hortobágy National Park, Hungary



János Tar, project coordinator
Szabolcs Lengyel, project manager

First meeting of project coordinators
Balmazújváros, Hungary
November 3-4, 2005

Presentation outline

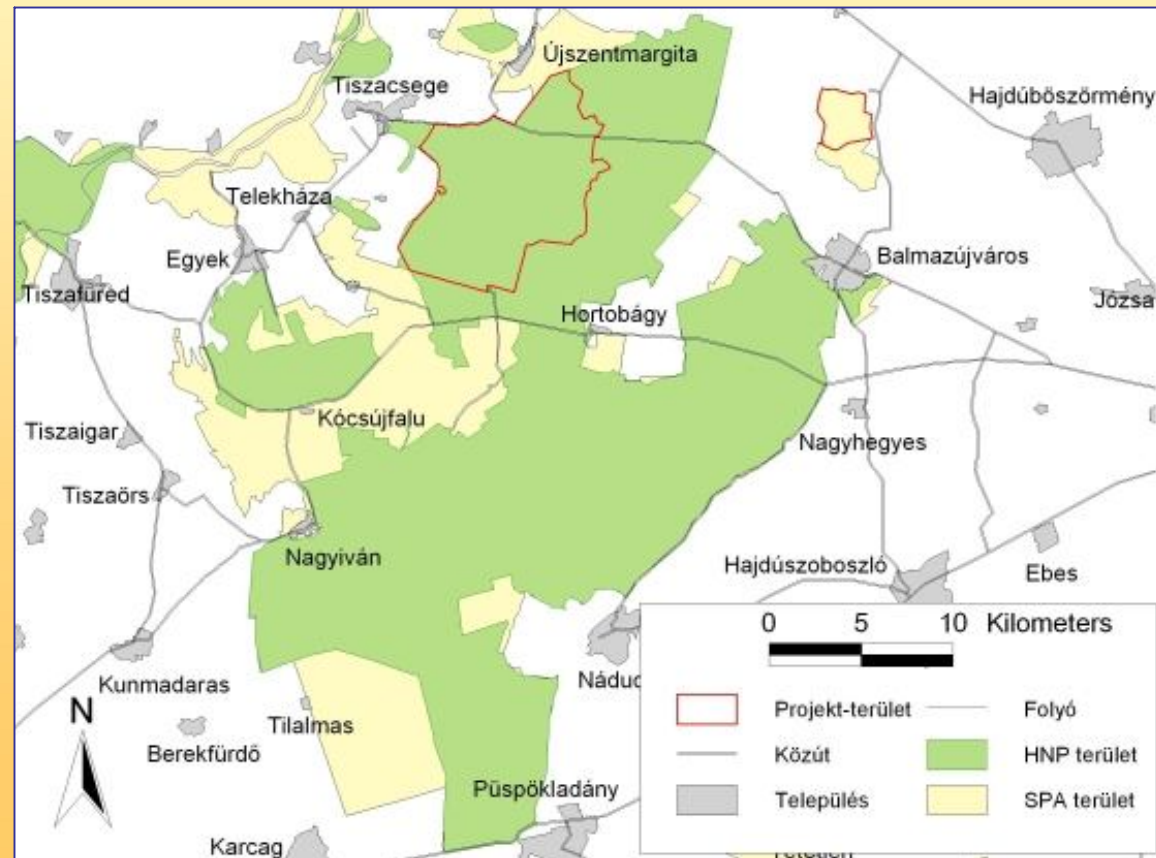
- project objectives
- project locations
- status of species and protection thus far
- measures and actions



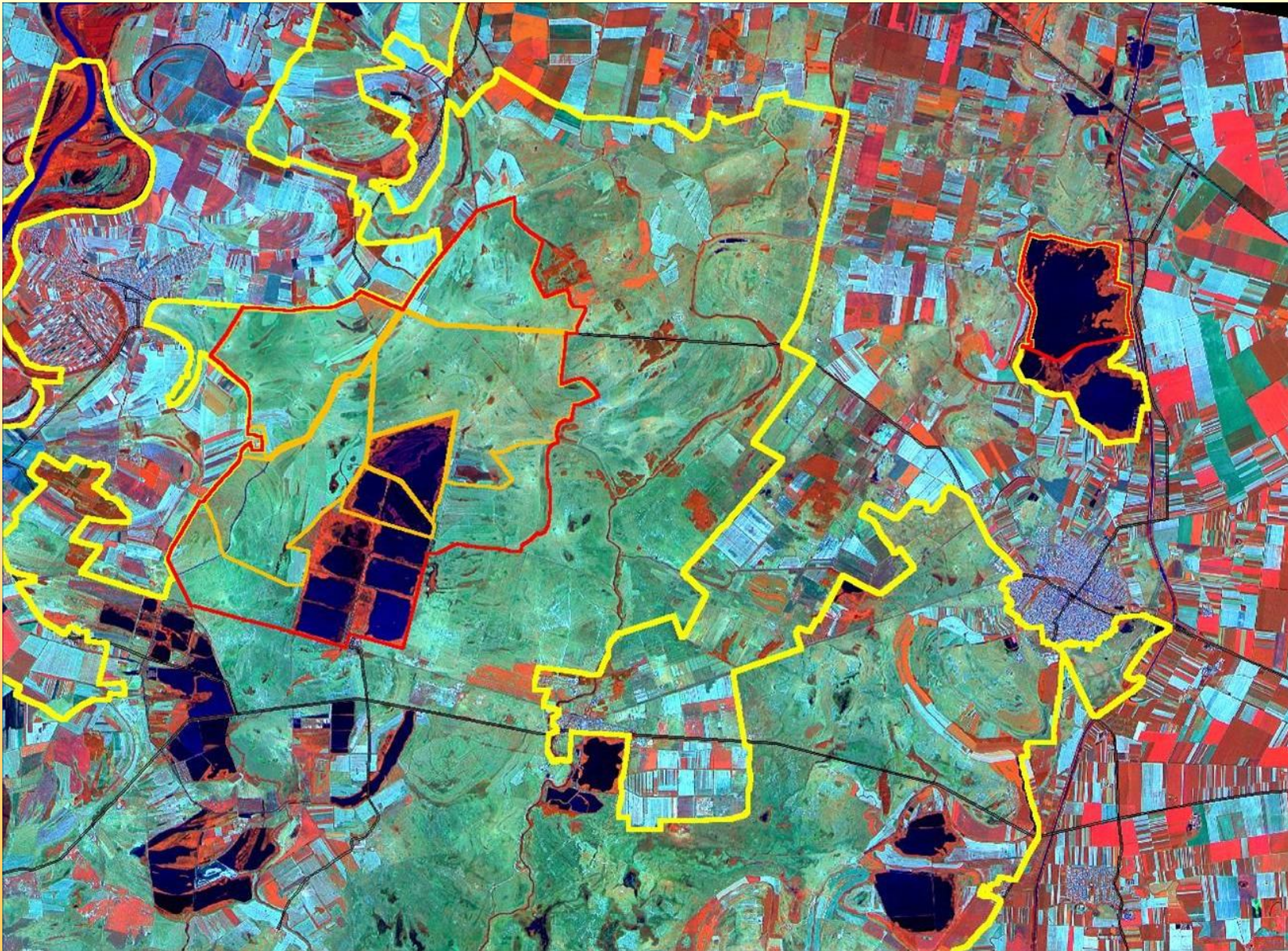
Threats and objectives

- mortality due to hunting
- habitat loss/degradation
 - roosting sites
 - feeding areas
- disturbance
 - by hunters
 - farmers
 - fisheries
 - bird observers
 - predators
- National Park areas: no hunting (safe areas)
 - roosting sites: fishponds
 - feeding areas: grasslands
arable lands

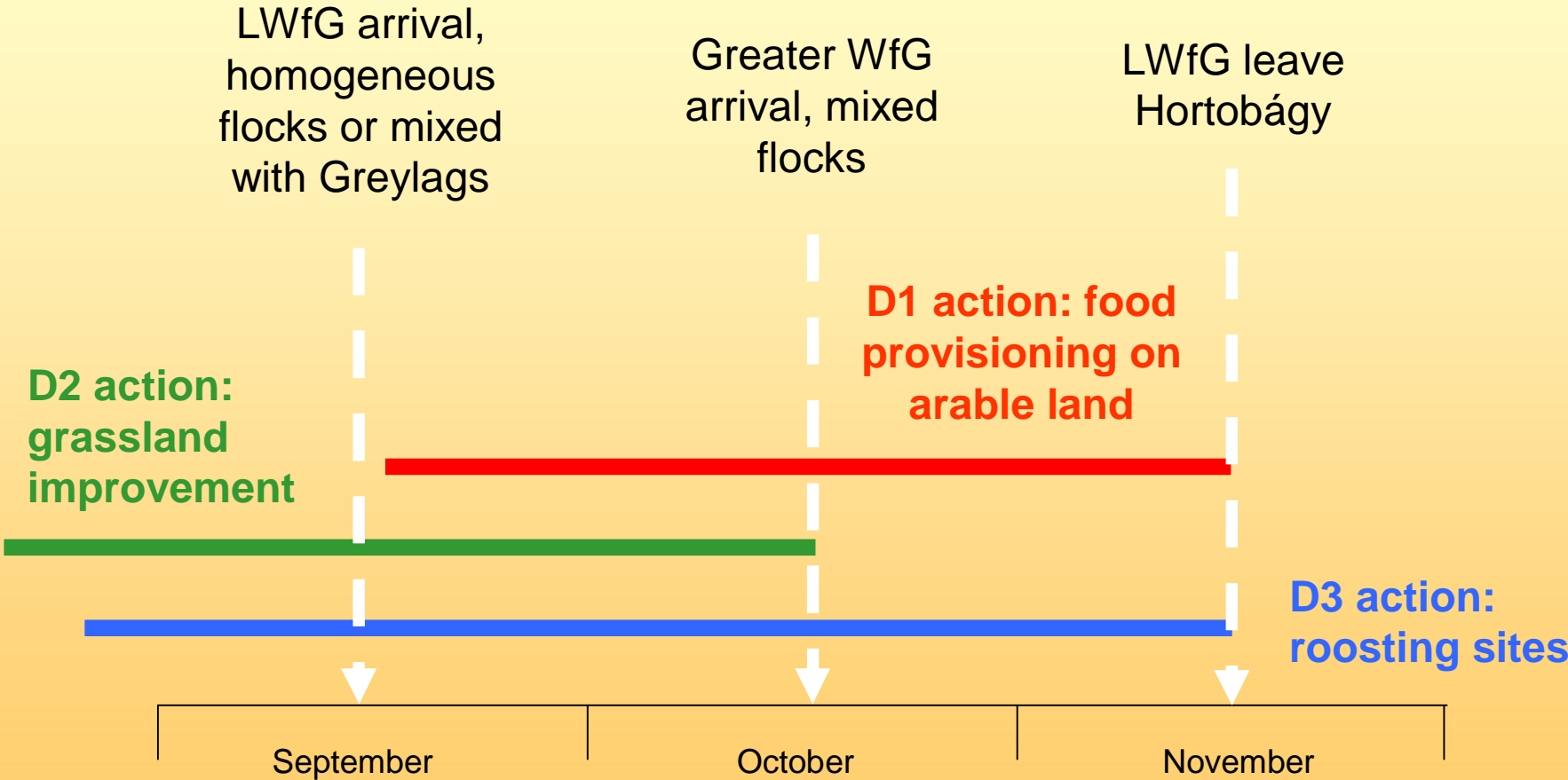
***aim of habitat
management actions:
to keep LWfG in safe
areas***



Project locations



Logic for actions



Status of LWfG in Hortobágy

- numbers by year: decrease
- annual differences important
 - 2003: dry year, site fidelity high
 - 2004/05: wet years, site fidelity low

Year	Spring	Autumn
2003	46	42
2004	38	29
2005	31	33

Protection thus far

- protection
 - roosting sites: water level kept at half depth optimal
 - importance of sites: Central fp. > Virágoskút > others (Bivalyhalom)
 - feeding sites:
 - observations in grasslands
 - observations on arable lands
- monitoring, reading of colour-rings, video-recording
 - new feeding areas identified – use depends on crop structure



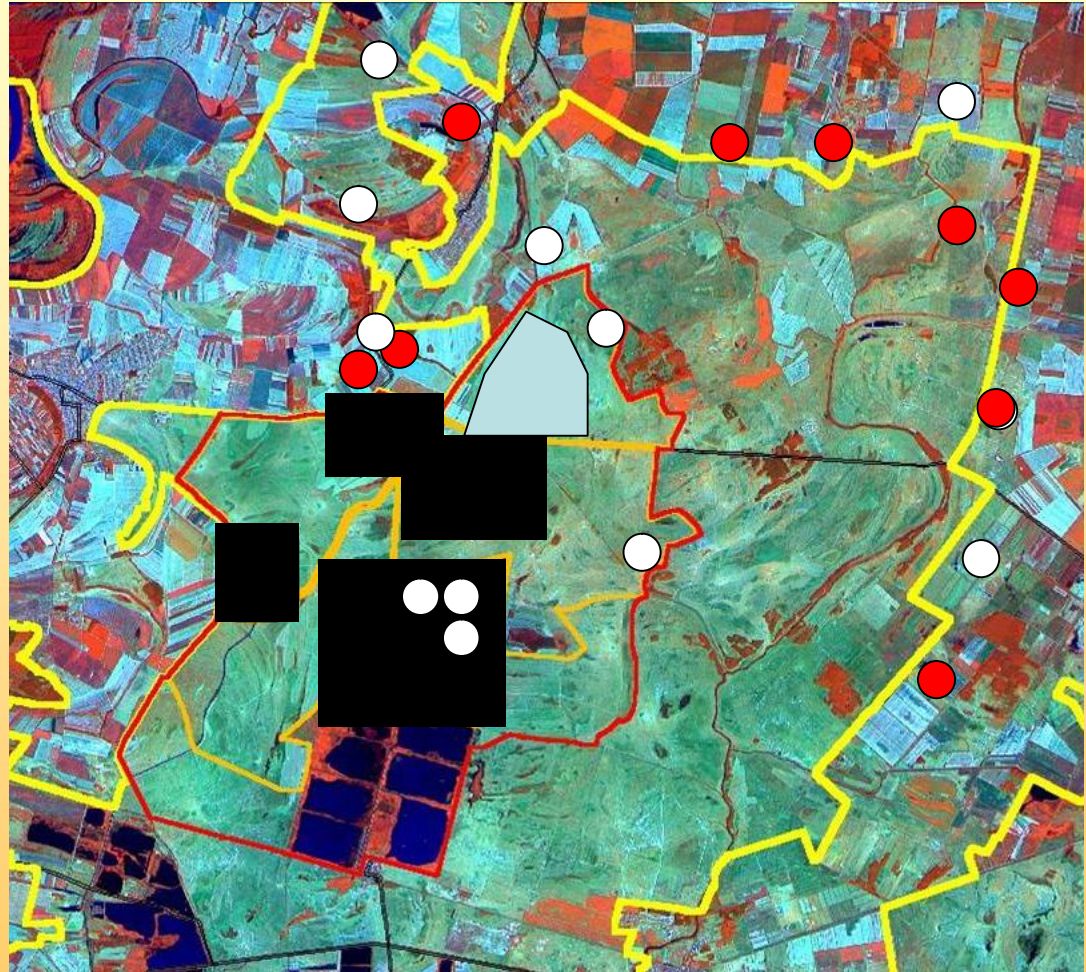
Hunting

- goose hunting season: from Dec 1 (2004-)
- steel pellets instead of lead pellets
- hunting pressure decreased in last few years:
 - increased control of goose-huntings by rangers
 - smaller numbers of migrating waterfowl
 - economic reasons
- space use by waterfowl changes due to decreased hunting (e.g. Virágoskút fishponds)



Actions: overview

- A5: space use study
- D1: food on arable lands
 - goose fields
 - crops offered
- D2: improved grasslands
- D3: roosting sites



Action D1: food provisioning

- D1: food on arable lands
 - goose fields:
 - preferred food crops grown on 140 ha
 - winter wheat, corn etc.
 - crops offered:
 - corn etc. offered on 25 ha
- (to reduce conflicts with farmers)



Action D2: grassland improvement

- aim: to induce fresh growth of grasses by:
 - grazing by cattle (July/August)
 - irrigation (late August)



Action D3: roosting sites

- aim: to set/control water levels optimal for LWfG roosting:
 - ca. 40 cm water depth on 600 ha
 - Central fishponds, either on Kondás or on units 5 & 6



Further actions

- public awareness activities: website (Eng/Hun), brochure, booklet, meetings, articles
- monitoring of:
 - LWfG (Hortobágy region)
 - habitat management actions (project area)



